

# Proposed Action and Alternatives

## ELEMENTS OF T-7A RECAPITALIZATION AT LAUGHLIN AFB:

- Replacement of all T-38C aircraft assigned to Laughlin AFB with T-7A aircraft.
- Transition of aircraft operations at Laughlin AFB and associated special use airspace from the T-38C to the T-7A.
- Introduction of nighttime (between 10 p.m. and 7 a.m.) T-7A operations.
- Changes to the number of personnel and dependents in the Laughlin AFB region.
- Construction and upgrade of specific facilities to support the pilot training and operations and maintenance of aircraft.

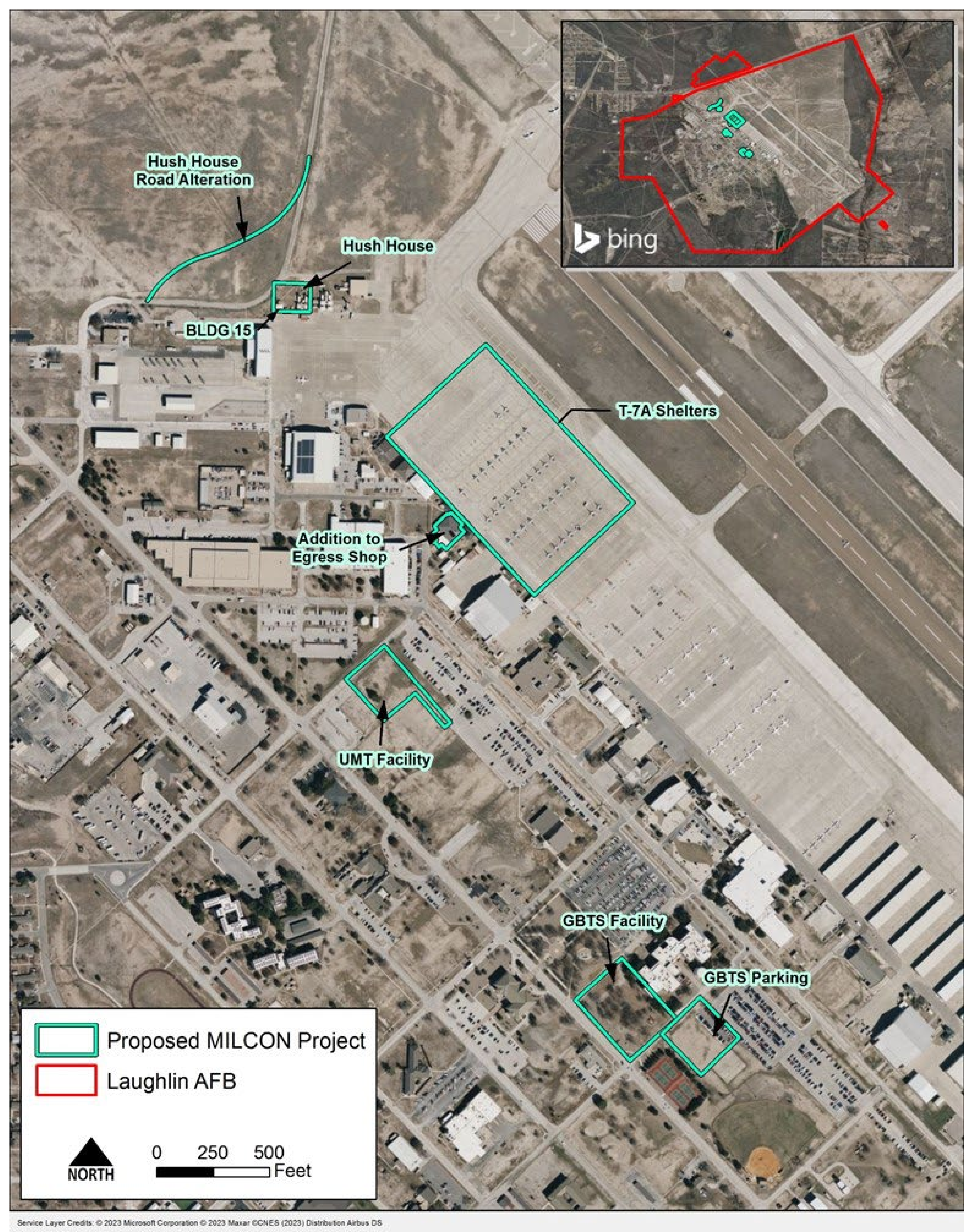
The number of aircraft, aircraft operations, and nighttime operations is evaluated as part of the three alternative actions to the Proposed Action.

### Personnel and Dependents

- Increase of 190 personnel and 361 dependents for 551 additional persons during the aircraft transition (2030 and 2031).
- Decrease of 60 personnel and 114 dependents for 174 fewer persons after 2031 (compared to current levels).

### Construction

- Ground Based Training System (GBTS) Facility
- Unit Maintenance Trainer (UMT) Facility
- Hush House and Road Alteration
- 48 or 60 T-7A Shelters
- Addition to Egress Shop
- Jet Blast Deflectors
- Seven facilities sustainment, restoration, and modernization projects.



Locations of Major Construction Projects



## ENVIRONMENTAL IMPACT STATEMENT

T-7A RECAPITALIZATION AT LAUGHLIN AIR FORCE BASE, TEXAS

